

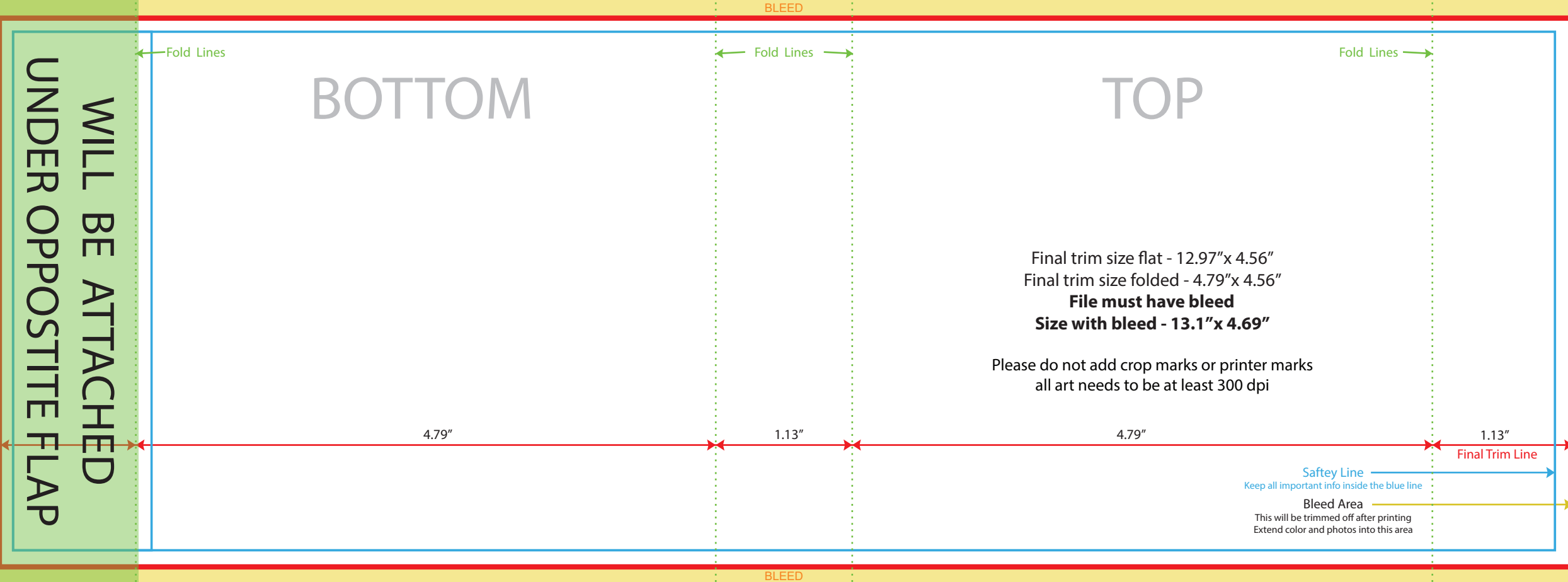
WILL BE ATTACHED
UNDER OPPOSITE FLAP

BOTTOM

TOP

Final trim size flat - 12.97"x 4.56"
Final trim size folded - 4.79"x 4.56"
File must have bleed
Size with bleed - 13.1"x 4.69"

Please do not add crop marks or printer marks
all art needs to be at least 300 dpi



Fold Lines

Fold Lines

Fold Lines

4.79"

1.13"

4.79"

1.13"

Saftey Line

Keep all important info inside the blue line

Bleed Area

This will be trimmed off after printing
Extend color and photos into this area

Final Trim Line

BLEED

BLEED